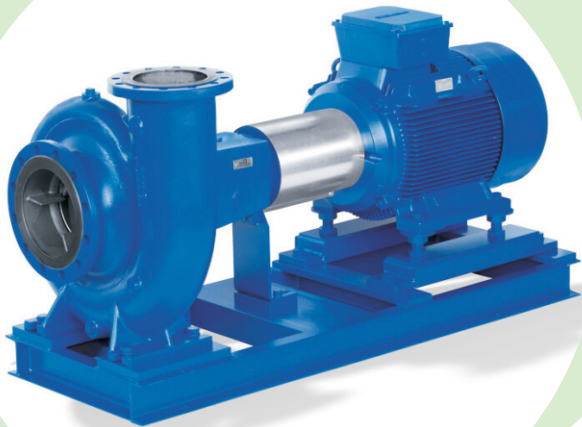


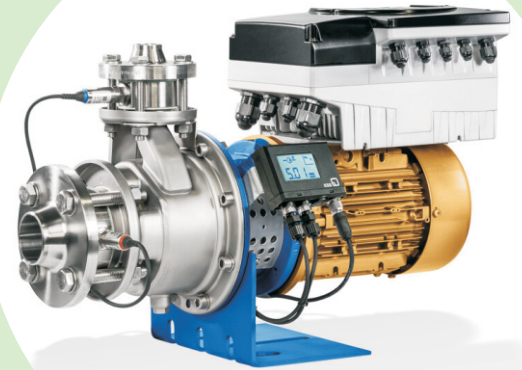


# SEALING

## ENGINEERING SERVICES LTD.



### PUMPS



## SEALING ENGINEERING SERVICES LTD.

Burgmann Mechanical Seal, O-Rings, Gland Packing, Gasket Sheets, etc. ■ Bredel Pumps, Hoses & Lubricants.  
Pumps & Pump Accessories (KSB, Hilge, Fristam, Alfa Laval, APV, Grundfos, etc.) ■ Valves (Butterfly Valves, Samson Valves, Check Valves, etc.)  
Gearbox, Geared Motors & Electric Motors ■ Electrical Spare Parts (Contactors, Switches, etc.) ■ Flow Meters  
Blowers, Fans & Compressors ■ Frequency Converters & Inverters Handling Tools & Equipment (Chain Hoist, Forklift, etc.)  
Pressure & Temperature Gauges ■ And Other Mechanical Spare Parts.

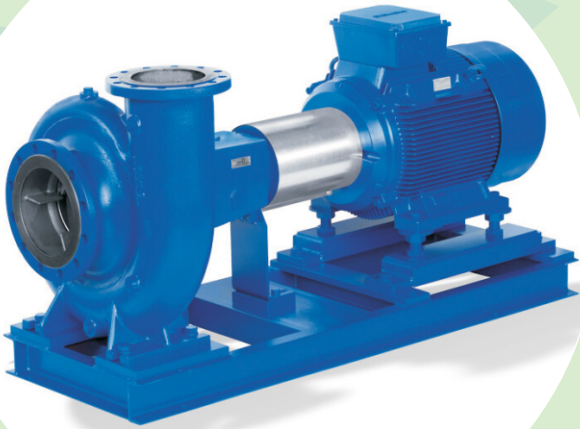
16A, PARIOLA STREET, VIA KOLAWOLE ASHIMI STREET,  
RAMAT B/STOP, OGUDU GRA, OGUDU, LAGOS.  
Mobile: (+234) 803 300 0241, (+234) 802 828 9557,  
E-mail: [info@sealingburgmann-nig.com](mailto:info@sealingburgmann-nig.com)  
Website: [www.sealingburgmann-nig.com](http://www.sealingburgmann-nig.com)

## Dry-installed pump

### Etanorm-R

PN:SESPM001

Horizontal long-coupled, single-stage (two-stage for pump size 125-500) volute casing pump in back pull-out design, with replaceable shaft sleeves shaft protecting sleeves and casing wear rings



#### Main Applications

Water supply systems

Spray irrigation systems

Drainage systems

Air-conditioning systems

#### Technical Data

Max. head 101 m

Min. head 2 m

Max. allowed working pressure 16 bar

Max. allowed fluid temperature 140 °C

## Submersible motor pump

### Amarexp

PN:SESPM002

Service-friendly non-self-priming single-stage hygienic close-coupled pump in back pull-out design with magnetless KSB SuPremE motor of efficiency class IE4/IE5 and PumpDrive variable speed system. The pump features a semi-open impeller and electropolished surfaces.

#### Main Applications

Food industry and beverage industry

Pharmaceutical industry

Chemical industry

#### Technical Data

Max. head 100 m

Min. head 1 m

Max. allowed working pressure 12 bar

Max. allowed fluid temperature 110 °C



## SEALING ENGINEERING SERVICES LTD.

Burgmann Mechanical Seal, O-Rings, Gland Packing, Gasket Sheets, etc. ■ Bredel Pumps, Hoses & Lubricants.  
Pumps & Pump Accessories (KSB, Hilge, Fristam, Alfa Laval, APV, Grundfos, etc.) ■ Valves (Butterfly Valves, Samson Valves, Check Valves, etc.)  
Gearbox, Geared Motors & Electric Motors ■ Electrical Spare Parts (Contactors, Switches, etc.) ■ Flow Meters  
Blowers, Fans & Compressors ■ Frequency Converters & Inverters Handling Tools & Equipment (Chain Hoist, Forklift, etc.)  
Pressure & Temperature Gauges ■ And Other Mechanical Spare Parts.

16A, PARIOLA STREET, VIA KOLAWOLE ASHIMI STREET,  
RAMAT B/STOP, OGUDU GRA, OGUDU, LAGOS.  
Mobile: (+234) 803 300 0241, (+234) 802 828 9557,  
E-mail: [info@sealingburgmann-nig.com](mailto:info@sealingburgmann-nig.com)  
Website: [www.sealingburgmann-nig.com](http://www.sealingburgmann-nig.com)

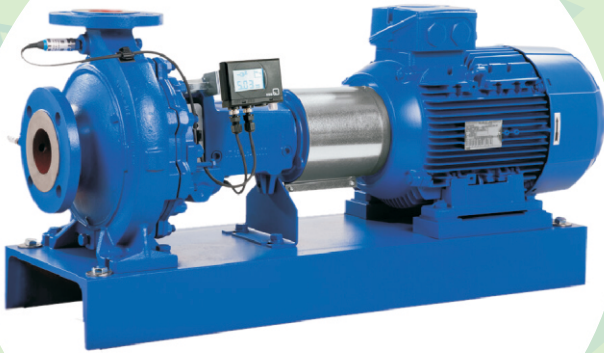
3

## Dry-installed pump

### Etanorm

PN:SESPM003

Horizontal volute casing pump, single-stage, with ratings and main dimensions to EN 733, long-coupled, back pull-out design, with replaceable shaft sleeves / shaft protecting sleeves and casing wear rings, with motor-mounted variable speed system.



Main Applications	Technical Data	
Handling clean or aggressive fluids not chemically and mechanically aggressive to the pump materials.	Max. head	160 m
	Min. head	2 m
Water supply systems	Max. allowed working pressure	16 bar
Cooling circuits	Max. allowed fluid temperature	140 °C
Swimming pools		

## Dry-installed pump Etaline L

PN:SESPM004

Single-stage close-coupled in-line volute casing pump, with PumpDrive variable speed system and common motor/pump shaft

Main Applications	Technical Data	
Service water supply systems	Max. head	21 m
Heating systems	Min. head	2 m
Industrial recirculation systems	Max. allowed working pressure	10 bar
Air-conditioning systems	Max. allowed fluid temperature	120 °C



## SEALING ENGINEERING SERVICES LTD.

Burgmann Mechanical Seal, O-Rings, Gland Packing, Gasket Sheets, etc. ■ Bredel Pumps, Hoses & Lubricants.  
Pumps & Pump Accessories (KSB, Hilge, Fristam, Alfa Laval, APV, Grundfos, etc.) ■ Valves (Butterfly Valves, Samson Valves, Check Valves, etc.)  
Gearbox, Geared Motors & Electric Motors ■ Electrical Spare Parts (Contactors, Switches, etc.) ■ Flow Meters  
Blowers, Fans & Compressors ■ Frequency Converters & Inverters Handling Tools & Equipment (Chain Hoist, Forklift, etc.)  
Pressure & Temperature Gauges ■ And Other Mechanical Spare Parts.

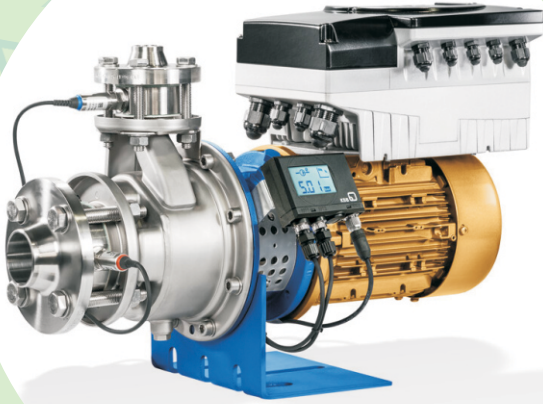
16A, PARIOLA STREET, VIA KOLAWOLE ASHIMI STREET,  
RAMAT B/STOP, OGUDU GRA, OGUDU, LAGOS.  
Mobile: (+234) 803 300 0241, (+234) 802 828 9557,  
E-mail: info@sealingburgmann-nig.com  
Website: [www.sealingburgmann-nig.com](http://www.sealingburgmann-nig.com)



## Dry-installed pump Etachrom B

PN:SESPM005

Horizontal single-stage close-coupled annular casing pump, with ratings and main dimensions to EN 733, with replaceable casing wear rings and motor-mounted variable speed system



### Main Applications

Cleaning systems (bottle rinsing, crate washing and similar systems)

Water treatment systems

Water supply systems

Fire-fighting systems

### Technical Data

Max. head 105 m

Min. head 2 m

Max. allowed working pressure 12 bar

Max. allowed fluid temperature 110 °C

## Ring-section pump Multitec

PN:SESPM006

Multistage horizontal or vertical centrifugal pump in ring-section design, long-coupled or close-coupled, with axial or radial suction nozzle, cast radial impellers and motor-mounted variable speed system.

ATEX-compliant version available.

### Main Applications

Water supply systems

Drinking water supply

Pressure boosting

General irrigation systems

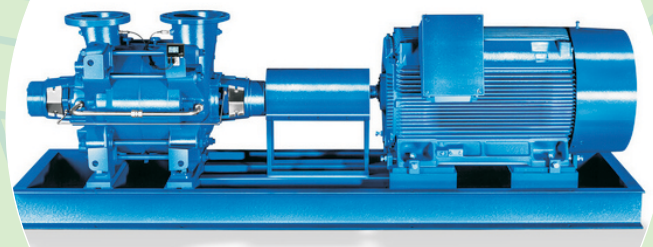
### Technical Data

Max. head 1000 m

Min. head 20 m

Max. allowed working pressure 100 bar

Max. allowed fluid temperature 200 °C



## SEALING ENGINEERING SERVICES LTD.

Burgmann Mechanical Seal, O-Rings, Gland Packing, Gasket Sheets, etc. ■ Bredel Pumps, Hoses & Lubricants.  
Pumps & Pump Accessories (KSB, Hilge, Fristam, Alfa Laval, APV, Grundfos, etc.) ■ Valves (Butterfly Valves, Samson Valves, Check Valves, etc.)  
Gearbox, Geared Motors & Electric Motors ■ Electrical Spare Parts (Contactors, Switches, etc.) ■ Flow Meters  
Blowers, Fans & Compressors ■ Frequency Converters & Inverters ■ Handling Tools & Equipment (Chain Hoist, Forklift, etc.)  
Pressure & Temperature Gauges ■ And Other Mechanical Spare Parts.

16A, PARIOLA STREET, VIA KOLAWOLE ASHIMI STREET,  
RAMAT B/STOP, OGUDU GRA, OGUDU, LAGOS.  
Mobile: (+234) 803 300 0241, (+234) 802 828 9557,  
E-mail: info@sealingburgmann-nig.com  
Website: [www.sealingburgmann-nig.com](http://www.sealingburgmann-nig.com)

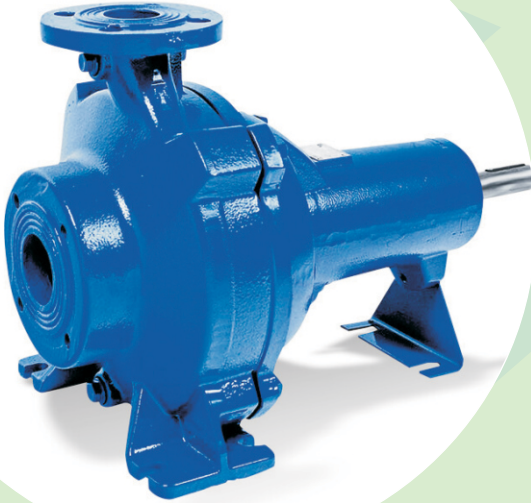


## Dry-installed pump

### Sewatec

PN:SESPM008

Close-coupled volute casing pump for horizontal or vertical installation, with various next-generation impeller types, discharge flange to DIN and ANSI standards. Explosion-proof version available.



Main Applications	Technical Data	
Waste water transport	Max. head	115 m
Waste water disposal	Min. head	2 m
Waste water management	Max. allowed working pressure	16 bar
Transport of contaminated surface water	Max. allowed fluid temperature	70 °C

## Submersible motor pump

### Ama-Drainer 4 / 5; Ama-Drainer 80/100

PN:SESPM009

### Ama-Drainer 4../5...

Main Applications	Technical Data	
Drainage	Max. head	26 m
Disposal	Min. head	1 m
Drainage systems	Max. allowed fluid temperature	40 °C
Lowering groundwater levels		



## SEALING ENGINEERING SERVICES LTD.

Burgmann Mechanical Seal, O-Rings, Gland Packing, Gasket Sheets, etc. ■ Bredel Pumps, Hoses & Lubricants.  
Pumps & Pump Accessories (KSB, Hilge, Fristam, Alfa Laval, APV, Grundfos, etc.) ■ Valves (Butterfly Valves, Samson Valves, Check Valves, etc.)  
Gearbox, Geared Motors & Electric Motors ■ Electrical Spare Parts (Contactors, Switches, etc.) ■ Flow Meters  
Blowers, Fans & Compressors ■ Frequency Converters & Inverters Handling Tools & Equipment (Chain Hoist, Forklift, etc.)  
Pressure & Temperature Gauges ■ And Other Mechanical Spare Parts.

16A, PARIOLA STREET, VIA KOLAWOLE ASHIMI STREET,  
RAMAT B/STOP, OGUDU GRA, OGUDU, LAGOS.  
Mobile: (+234) 803 300 0241, (+234) 802 828 9557,  
E-mail: info@sealingburgmann-nig.com  
Website: [www.sealingburgmann-nig.com](http://www.sealingburgmann-nig.com)

## Submersible motor pump Ama-Porter

PN:SESPM010

Vertical single-stage fully floodable submersible waste water pump in close-coupled design (grey cast iron variant), non-explosion-proof.



### Main Applications

Drainage systems  
Water extraction  
Draining of pits, shafts, etc.

### Technical Data

Max. head	21 m
Min. head	0.1 m
Max. allowed working pressure	16 bar
Max. allowed fluid temperature	40 °C

## Submersible motor pump Amarex

PROFIN VT1

PN:SESPM011

Vertical single-stage submersible motor pump for wet installation, with free-flow impeller (F-max) or open dual-vane impeller (D-max), stationary or transportable version.

Single-stage, single-entry close-coupled pump sets which are not self-priming.

ATEX-compliant version available. .

### Main Applications

Waste water transport  
Waste water management  
Drainage systems  
Waste water treatment plants

### Technical Data

Max. head	42 m
Min. head	1 m
Max. allowed working pressure	4 bar
Max. allowed fluid temperature	40 °C



## SEALING ENGINEERING SERVICES LTD.

Burgmann Mechanical Seal, O-Rings, Gland Packing, Gasket Sheets, etc. ■ Bredel Pumps, Hoses & Lubricants.  
Pumps & Pump Accessories (KSB, Hilge, Fristam, Alfa Laval, APV, Grundfos, etc.) ■ Valves (Butterfly Valves, Samson Valves, Check Valves, etc.)  
Gearbox, Geared Motors & Electric Motors ■ Electrical Spare Parts (Contactors, Switches, etc.) ■ Flow Meters  
Blowers, Fans & Compressors ■ Frequency Converters & Inverters Handling Tools & Equipment (Chain Hoist, Forklift, etc.)  
Pressure & Temperature Gauges ■ And Other Mechanical Spare Parts.

16A, PARIOLA STREET, VIA KOLAWOLE ASHIMI STREET,  
RAMAT B/STOP, OGUDU GRA, OGUDU, LAGOS.  
Mobile: (+234) 803 300 0241, (+234) 802 828 9557,  
E-mail: [info@sealingburgmann-nig.com](mailto:info@sealingburgmann-nig.com)  
Website: [www.sealingburgmann-nig.com](http://www.sealingburgmann-nig.com)

## Dry-installed pump

### Calio-Therm NC

PN:SESPM012

Strainer

BOA-S

Maintenance-free fixed speed glandless drinking water circulator pump, screw-ended, electric motor with multiple fixed speed levels, for use in drinking water supply systems and hot water supply systems.



Main Applications	Technical Data	
Drinking water supply	Max. head	7 m
Hot-water supply	Min. head	0.2 m
Similar systems in industry and building services applications (e.g. cooling water circulation)	Max. allowed working pressure	10 bar
	Max. allowed fluid temperature	110 °C

## Vertical shaft submersible pump

### Movitec VCI

PN:SESPM012

Multistage vertical high-pressure immersion pump for installation on tanks or platforms.



### Main Applications

Machine tools  
Industrial washing machines  
Condensate transport

### Technical Data

Machine tools	Max. head	249 m
Industrial washing machines	Min. head	0.1 m
Condensate transport	Max. allowed working pressure	25 bar
	Max. allowed fluid temperature	120 °C

## SEALING ENGINEERING SERVICES LTD.

Burgmann Mechanical Seal, O-Rings, Gland Packing, Gasket Sheets, etc. ■ Bredel Pumps, Hoses & Lubricants.  
Pumps & Pump Accessories (KSB, Hilge, Fristam, Alfa Laval, APV, Grundfos, etc.) ■ Valves (Butterfly Valves, Samson Valves, Check Valves, etc.)  
Gearbox, Geared Motors & Electric Motors ■ Electrical Spare Parts (Contactors, Switches, etc.) ■ Flow Meters  
Blowers, Fans & Compressors ■ Frequency Converters & Inverters Handling Tools & Equipment (Chain Hoist, Forklift, etc.)  
Pressure & Temperature Gauges ■ And Other Mechanical Spare Parts.

16A, PARIOLA STREET, VIA KOLAWOLE ASHIMI STREET,  
RAMAT B/STOP, OGUDU GRA, OGUDU, LAGOS.  
Mobile: (+234) 803 300 0241, (+234) 802 828 9557,  
E-mail: [info@sealingburgmann-nig.com](mailto:info@sealingburgmann-nig.com)  
Website: [www.sealingburgmann-nig.com](http://www.sealingburgmann-nig.com)



## Dry-installed pump Multi Eco

PN:SESPM014

Multistage self-priming centrifugal pump in close-coupled design.



### Main Applications

Spray irrigation systems  
General irrigation systems  
Rainwater harvesting  
Washing plants

### Technical Data

Max. head	54 m
Min. head	2 m
Max. allowed working pressure	10 bar
Max. allowed fluid temperature	50 °C

## Self-priming Centrifugal Pumps BG

PN:SESPM015

Self-priming close-coupled centrifugal pumps with built-in ejector system, designed to remain primed even in the presence of water-dissolved gases.

GENERAL SPECIFICATION	BG
DELIVERY	up to 4.20 m <sup>3</sup> /h
HEAD	up to 53 m
POWER SUPPLY	both single and three-phase 50 and 60 Hz
POWER	from 0.37 kW up to 1.10 kW
MAXIMUM OPERATING PRESSURE	8 bar
TEMPERATURE OF PUMPED LIQUID	from -10 °C to 40 °C



## SEALING ENGINEERING SERVICES LTD.

Burgmann Mechanical Seal, O-Rings, Gland Packing, Gasket Sheets, etc. ■ Bredel Pumps, Hoses & Lubricants.  
Pumps & Pump Accessories (KSB, Hilge, Fristam, Alfa Laval, APV, Grundfos, etc.) ■ Valves (Butterfly Valves, Samson Valves, Check Valves, etc.)  
Gearbox, Geared Motors & Electric Motors ■ Electrical Spare Parts (Contactors, Switches, etc.) ■ Flow Meters  
Blowers, Fans & Compressors ■ Frequency Converters & Inverters Handling Tools & Equipment (Chain Hoist, Forklift, etc.)  
Pressure & Temperature Gauges ■ And Other Mechanical Spare Parts.

16A, PARIOLA STREET, VIA KOLAWOLE ASHIMI STREET,  
RAMAT B/STOP, OGUDU GRA, OGUDU, LAGOS.  
Mobile: (+234) 803 300 0241, (+234) 802 828 9557,  
E-mail: [info@sealingburgmann-nig.com](mailto:info@sealingburgmann-nig.com)  
Website: [www.sealingburgmann-nig.com](http://www.sealingburgmann-nig.com)

## Submersible Wastewater Pumps DL

PN:SESPM016

DL series electric pumps, made of cast iron and stainless steel, are available with single channel or Vortex impeller (DLV).



GENERAL SPECIFICATION	DL SUBMERSIBLE PUMPS WITH SOLIDS-LADEN WASTEWATER
DELIVERY	up to 42 m <sup>3</sup> /h
HEAD	up to 21 m
POWER SUPPLY	both single and three-phase 50 and 60 Hz
POWER	from 0.60 kW up to 1.50 kW
TEMPERATURE OF PUMPED LIQUID	to 50 °C
MAXIMUM IMMERSION DEPTH	5 m
FREE PASSAGE	up to 50 mm

## Submersible Dewatering Pumps

### DIWA

PN:SESPM017

Submersible pumps for dirty water manufactured in AISI 304 stainless steel. Four basic models with 0.55 (0.75 HP) to 1.5 kW (2HP) rated power



GENERAL SPECIFICATION	DIWA SUBMERSIBLE PUMPS FOR DIRTY WATER
DELIVERY	up to 25 m <sup>3</sup> /h
HEAD	up to 21 m
POWER SUPPLY	both single and three-phase 50 and 60 Hz
POWER	from 0.55 kW up to 1.50 kW
TEMPERATURE OF PUMPED LIQUID	to 50 °C
MAXIMUM IMMERSION DEPTH	7 m
FREE PASSAGE	up to 8 mm

## SEALING ENGINEERING SERVICES LTD.

Burgmann Mechanical Seal, O-Rings, Gland Packing, Gasket Sheets, etc. ■ Bredel Pumps, Hoses & Lubricants.  
Pumps & Pump Accessories (KSB, Hilge, Fristam, Alfa Laval, APV, Grundfos, etc.) ■ Valves (Butterfly Valves, Samson Valves, Check Valves, etc.)  
Gearbox, Geared Motors & Electric Motors ■ Electrical Spare Parts (Contactors, Switches, etc.) ■ Flow Meters  
Blowers, Fans & Compressors ■ Frequency Converters & Inverters ■ Handling Tools & Equipment (Chain Hoist, Forklift, etc.)  
Pressure & Temperature Gauges ■ And Other Mechanical Spare Parts.

16A, PARIOLA STREET, VIA KOLAWOLE ASHIMI STREET,  
RAMAT B/STOP, OGUDU GRA, OGUDU, LAGOS.  
Mobile: (+234) 803 300 0241, (+234) 802 828 9557,  
E-mail: [info@sealingburgmann-nig.com](mailto:info@sealingburgmann-nig.com)  
Website: [www.sealingburgmann-nig.com](http://www.sealingburgmann-nig.com)

## End suction Centrifugal Pumps e-SH

PN:SESPM018

The Lowara e-SH series is a single impeller centrifugal pump made in AISI 316 stainless steel, making it the right pump for moving water and aggressive liquids in a vast number of applications where high chemical resistance is needed.



GENERAL SPECIFICATION	E-SH STAINLESS STEEL
DELIVERY	up to 240 m <sup>3</sup> /h
HEAD	up to 110 m
POWER SUPPLY	three-phase 50 and 60 Hz
POWER	from 0,25 kW up to 75 kW
TEMPERATURE OF PUMPED LIQUID	from -10°C to +120°C
EXTENDED TEMPERATURE VERSIONS	from -30°C to +120°C

## SEALING ENGINEERING SERVICES LTD.

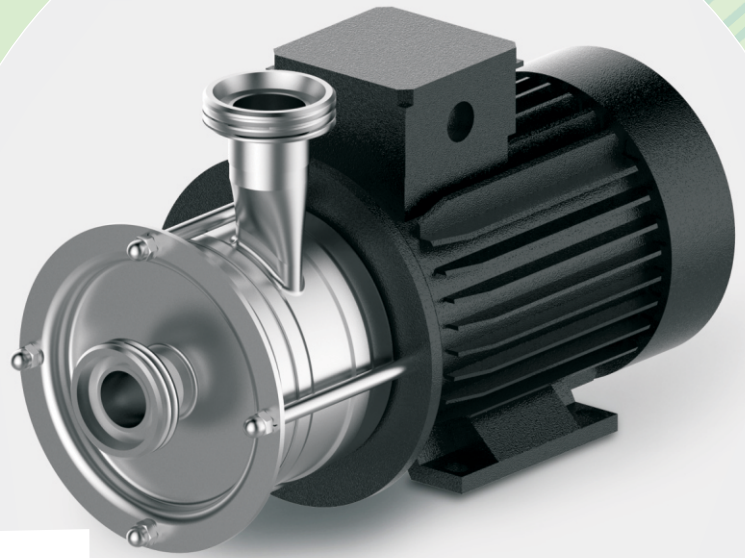
Burgmann Mechanical Seal, O-Rings, Gland Packing, Gasket Sheets, etc. ■ Bredel Pumps, Hoses & Lubricants.  
Pumps & Pump Accessories (KSB, Hilge, Fristam, Alfa Laval, APV, Grundfos, etc.) ■ Valves (Butterfly Valves, Samson Valves, Check Valves, etc.)  
Gearbox, Geared Motors & Electric Motors ■ Electrical Spare Parts (Contactors, Switches, etc.) ■ Flow Meters  
Blowers, Fans & Compressors ■ Frequency Converters & Inverters Handling Tools & Equipment (Chain Hoist, Forklift, etc.)  
Pressure & Temperature Gauges ■ And Other Mechanical Spare Parts.

16A, PARIOLA STREET, VIA KOLAWOLE ASHIMI STREET,  
RAMAT B/STOP, OGUDU GRA, OGUDU, LAGOS.  
Mobile: (+234) 803 300 0241, (+234) 802 828 9557,  
E-mail: [info@sealingburgmann-nig.com](mailto:info@sealingburgmann-nig.com)  
Website: [www.sealingburgmann-nig.com](http://www.sealingburgmann-nig.com)



## GEA Hilge DURIETTA

PN:SESPM019



GEA Hilge DURIETTA	50 Hz	60 Hz
Flow	8 m <sup>3</sup> /h	8 m <sup>3</sup> /h
Head	75 m	42 m
Operating temperature	95 °C	
Operating pressure	max. 8 bar	

## SEALING ENGINEERING SERVICES LTD.

Burgmann Mechanical Seal, O-Rings, Gland Packing, Gasket Sheets, etc. ■ Bredel Pumps, Hoses & Lubricants.  
 Pumps & Pump Accessories (KSB, Hilge, Fristam, Alfa Laval, APV, Grundfos, etc.) ■ Valves (Butterfly Valves, Samson Valves, Check Valves, etc.)  
 Gearbox, Geared Motors & Electric Motors ■ Electrical Spare Parts (Contactors, Switches, etc.) ■ Flow Meters  
 Blowers, Fans & Compressors ■ Frequency Converters & Inverters Handling Tools & Equipment (Chain Hoist, Forklift, etc.)  
 Pressure & Temperature Gauges ■ And Other Mechanical Spare Parts.

16A, PARIOLA STREET, VIA KOLAWOLE ASHIMI STREET,  
 RAMAT B/STOP, OGUDU GRA, OGUDU, LAGOS.  
 Mobile: (+234) 803 300 0241, (+234) 802 828 9557,  
 E-mail: [info@sealingburgmann-nig.com](mailto:info@sealingburgmann-nig.com)  
 Website: [www.sealingburgmann-nig.com](http://www.sealingburgmann-nig.com)

## End Suction Centrifugal Pumps Vogel series LSN

PN:SESPM020



### GENERAL SPECIFICATION

### VOGEL SERIES LSN

#### DELIVERY

up to 450 m<sup>3</sup>/h

#### HEAD

up to 150 m

#### POWER SUPPLY

three-phase 50 and 60 Hz

#### MAXIMUM OPERATING PRESSURE

16 bar

#### TEMPERATURE OF PUMPED LIQUID

from -40°C to 180°C

## SEALING ENGINEERING SERVICES LTD.

Burgmann Mechanical Seal, O-Rings, Gland Packing, Gasket Sheets, etc. ■ Bredel Pumps, Hoses & Lubricants.  
Pumps & Pump Accessories (KSB, Hilge, Fristam, Alfa Laval, APV, Grundfos, etc.) ■ Valves (Butterfly Valves, Samson Valves, Check Valves, etc.)  
Gearbox, Geared Motors & Electric Motors ■ Electrical Spare Parts (Contactors, Switches, etc.) ■ Flow Meters  
Blowers, Fans & Compressors ■ Frequency Converters & Inverters Handling Tools & Equipment (Chain Hoist, Forklift, etc.)  
Pressure & Temperature Gauges ■ And Other Mechanical Spare Parts.

16A, PARIOLA STREET, VIA KOLAWOLE ASHIMI STREET,  
RAMAT B/STOP, OGUDU GRA, OGUDU, LAGOS.  
Mobile: (+234) 803 300 0241, (+234) 802 828 9557,  
E-mail: [info@sealingburgmann-nig.com](mailto:info@sealingburgmann-nig.com)  
Website: [www.sealingburgmann-nig.com](http://www.sealingburgmann-nig.com)